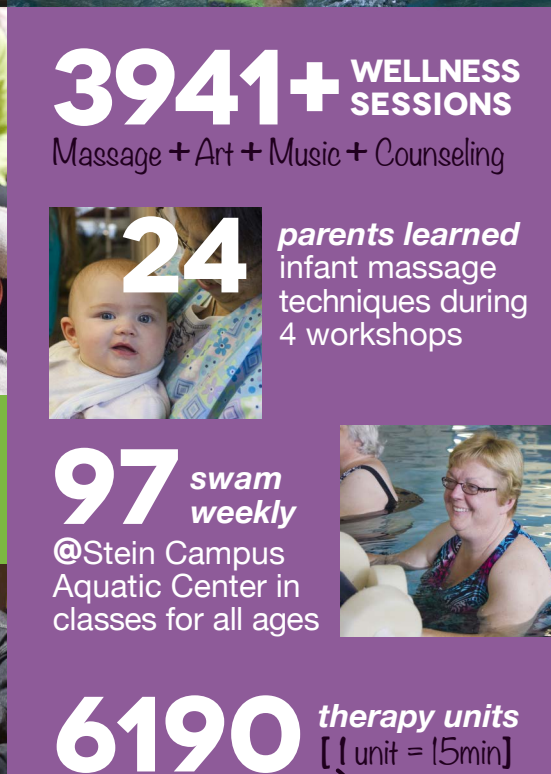
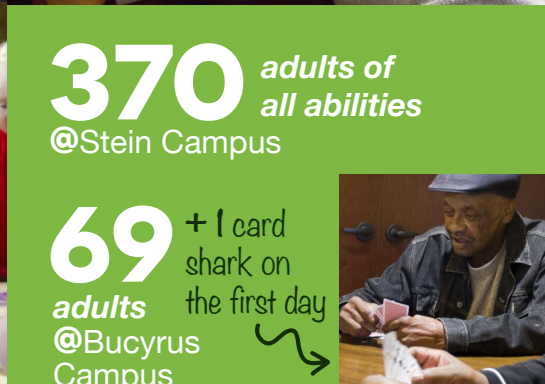


2015 GROWTH & Development



113 children enrolled
@Stein Campus
↳ That's 100% occupancy!



4 gumdrops
shared to make
a pretty sweet
gingerbread
house

101 children
enrolled
@Bucyrus
Campus
= FULL occupancy in Sally's Ball Pit



90 Buddies, youth
ages 11 - 15 in our
service learning
program, created

131 greeting
cards!

FOR
adults

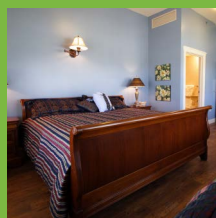
370 adults of
all abilities
@Stein Campus

69 + 1 card
shark on
the first day
@Bucyrus
Campus



3085+ BATHS
GIVEN

980
adults stayed
@Respite
Open 24-7-365



7 types of meals
made daily to
meet nutritional
needs of adults
390,000+ dishes
washed this year



FOR
the community

3941+ WELLNESS
SESSIONS
Massage + Art + Music + Counseling



24 parents learned
infant massage
techniques during
4 workshops

97 swam
weekly
@Stein Campus
Aquatic Center in
classes for all ages



6190 therapy units
[1 unit = 15min]



\$51,521
in salon services
@Stein Campus

THANK YOU,
Friends &
Supporters for

27,362 TOTAL HOURS of volunteer service

\$144,961 net raised for Care Champions
From 4 events = Talent Show + Gala + Golf Outing + Run/Walk

\$2,922,222 raised for our new
Bucyrus Campus which opened its doors on September 1st
= 44 people, who found rewarding employment at the new campus

St Ann
CENTER
for Intergenerational Care

Ministry of
Sisters of
St. Francis
of Assisi

STEIN CAMPUS
2801 E. Morgan Ave.
Milwaukee, WI 53207
(414) 977-5000

BUCYRUS CAMPUS
2450 W. North Ave.
Milwaukee, WI 53205
(414) 210-2450

STANNCENTER.ORG

\$75

← Average daily cost of care for one adult

-\$55

← Reimbursement received from government
programs or private pay

\$20

WHY YOUR DONATIONS MATTER
so much!